

PE1404/CC

The Quality Unit

Planning and Quality Division

T: 0131-244 2573

E: tom.pilcher@scotland.gsi.gov.uk



Anne Peat, Clerk to the Public Petitions Committee

By email: Anne.Peat@scottish.parliament.uk



LEGACY 2014
XX COMMONWEALTH GAMES
SCOTLAND

25 September 2013

Dear Anne,

Public Petition PE01404 – Insulin Pump Therapy

You will recall that at the meeting of the Public Petitions Committee on 14 May 2013, Michael Matheson, Minister for Public Health agreed to keep the Committee informed of NHSScotland's latest progress in the provision of insulin pump therapy.

Mr Matheson has asked that I provide the Committee with the attached insulin pump report, which was shared earlier this month with the Scottish Diabetes Group for comment and review. The Petitioner, Diabetes UK Scotland, as a member of the Scottish Diabetes Group, has also been asked for their views which will be taken into account in our on-going improvement programme.

The report is also being shared with diabetes MCN's, to help them track and compare the progress, made so far within each of their NHS boards.

I hope that the Committee finds the information contained in this outline report helpful in its consideration of Public Petition PE-01404. If Committee members have any further questions in relation to this work please contact me on 0131 244 2573 or tom.pilcher@scotland.gsi.gov.uk.

Yours sincerely

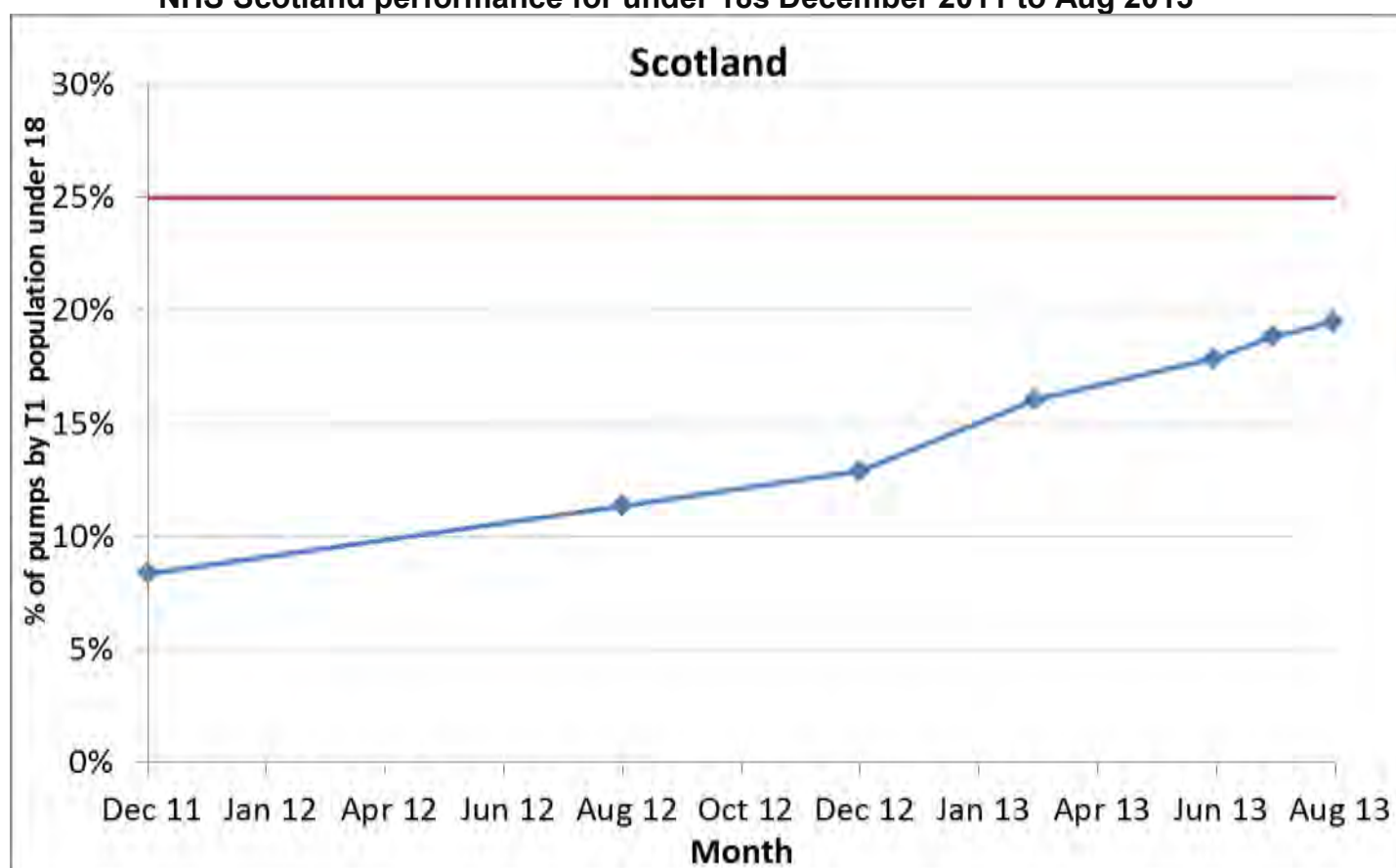
TOM PILCHER

NHSSCOTLAND INSULIN PUMP PROVISION UPDATE SEPTEMBER 2013

This report provides an account of NHSScotland's performance to date in relation to the provision of insulin pump therapy and identifies some of the national improvement activity that is currently underway.

The report below contains management data, provided by NHS boards, which has **not** been validated.

NHS Scotland performance for under 18s December 2011 to Aug 2013



Summary of Performance

- The annual insulin pump provision rate of increase has increased more than fourfold since 2011 (previous rate of increase was 0.5%/year, this is now ~2.2%/year).
- The total number of people on pumps has increased from 3.1% as reported in the Scottish Diabetes Survey 2011, to 5.5% in August 2013.
- Insulin pump provision for people under 18 has increased by over 10% and the percentage of provision has more than doubled from 8.4% to 19.6% across Scotland. This means an additional 329 people under 18 having access to pumps since December 2011.

- While overall provision has increased significantly, there remains significant variation between NHS boards.
- Five NHS Boards have now met the under 18s commitment: NHS Borders, NHS Tayside, NHS Shetland, NHS Greater Glasgow and Clyde and NHS Dumfries and Galloway.
- Progress is significantly slower in a few boards. Including NHS Highland, Grampian, NHS Lanarkshire and NHS Forth Valley. The improvement team will be visiting these boards.
- Insulin pump provision for over 18 year olds has increased from 2.5% to 3.9% across Scotland, with an additional 394 people over 18 having access to pumps since December 2011.
- NHS Borders, NHS Lothian and NHS Fife have already met the over 18 yrs (March 2015) commitment. However NHS Grampian, NHS Greater Glasgow and Clyde and NHS Lanarkshire have shown a bit of slowing of progress in this area.
- All boards but NHS Highland and Lanarkshire have committed to reaching the 25% level of provision by March 2014 if not sooner. NHS Highland and NHS Lanarkshire have committed to reaching this level by March 2015.

Monitoring

1. Monthly pump provision data from each NHS board is provided to officials in the Clinical Priorities Team. Reports are shared with Ministers, and the Diabetes Group at each of its meetings. The Minister for Public Health agreed to keep the Public Petitions Committee informed of progress on a regular basis on 14 May 2013. Pump data is now collected via SCI-Diabetes and the data is published annually in the Scottish Diabetes Survey. Each board has updated their action plan to supplement the existing plans posted on (<http://www.diabetesinscotland.org.uk/Publications.aspx?catId=6>).

Improvement team

2. The Insulin Pump Improvement team, established earlier this year, consists of key clinical representatives, SG performance management colleagues and our Diabetes Action Plan Coordinator. It will visit NHS Boards and support them to address local challenges. These visits will be supplemented by one to one clinical contact, meetings and reporting.

3. It is intended that the support provided to NHS Boards through the team will reflect individual NHS Board's needs. They will:

- work with NHS Boards to establish the barriers to implementation and work with NHS Boards to actively address these;
- investigate reasons for high reject rates;
- work to improve clinical perception of insulin pump therapy;
- engage where appropriate with third sector stakeholders to improve public awareness of insulin pumps and their uses;
- link to NHS Boards where good progress has been made to draw on their best practice to share with other NHS Boards;

- provide update reports to SG on progress towards meeting the commitments.

4. A visit has already been made to NHS Highland and NHS Lanarkshire. A currently time table for formal visits including a follow up visit to NHS Highland, is included below – it is expected that this will be supplemented by further visits:

September 2013	Teleconference with NHS Highland and NHS Forth Valley
October 2013	Visit NHS Grampian and NHS Forth Valley
November 2013	Visit NHS Lanarkshire and NHS Lothian

National Insulin Pump Meeting - Stirling - 28 June

5. The aim of the meeting, which included representation from every board area, was to 1) share experiences and identify areas of good practice which could be shared; and 2) to identify aspects of running a pump service which need addressed.

6. The attendees considered the following topics in detail: **patient identification; education; documentation; and service provision.**

7. Outcomes from the national meeting, to be taken forward by the national improvement team included:

- A scoping exercise of the availability of insulin pump education.
- A review of documentation to ensure all patients are assessed and managed to nationally agreed criteria.
- Establish how different centres manage waiting times for pump patients
- Collate information on the methods teams use to initiate insulin this information should be collated to encourage sharing of good practice.
- Identify ways of supporting out of hours management (NHS24 Management out of hours varies throughout the country some centres receive out of hours payment others do not. Support for other agencies that may be in contact with pump users such as ED and NHS 24 needs to be developed to ensure information is available on IT systems. Forth Valley has done some work on this which they are happy to share.
- Education for health care professionals who are not in daily contact with insulin pumps but may encounter patients using this device. Explore an e-learning resource being developed similar to the safe use of insulin.
- Review issues around the insulin pump warranty. .
- Further national insulin pump meetings to be arranged. – Topics to be considered include: **Long term planning of service, models of service provision, sustainability of services, patient follow up, third sector involvement, pregnancy.**

8. Progress will continue to be monitored towards this commitment on a monthly basis. Our Insulin Pump Improvement Team will arrange to visit the Boards furthest behind later this year as per the table above.

Clinical Priorities Team
Scottish Government Health and Social Care Directorates
September 2013

ANNEX A

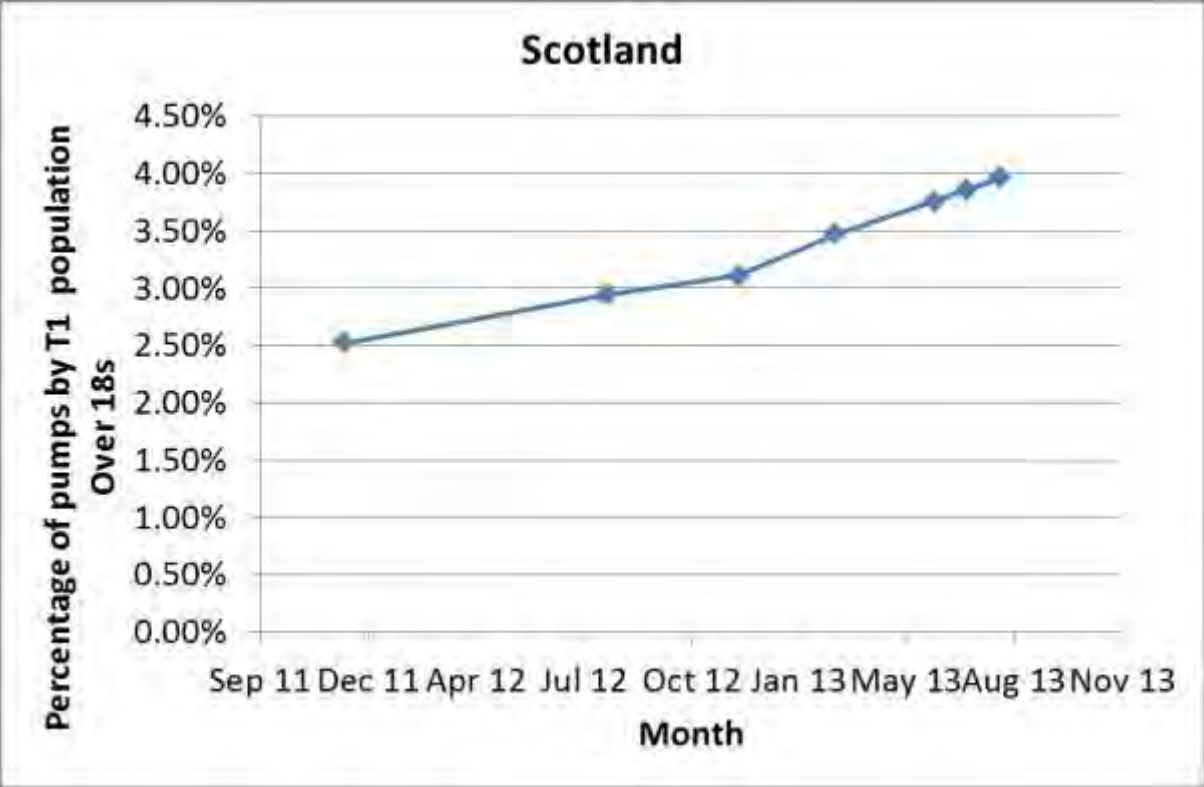
Insulin Pump Provision for Under 18's

NHS Board	number of people <18 with T1DM (August 2013)	25% Aim as of March 2013 (to equitably meet required provision)	Number of people<18 on an insulin pump and percentage of <18 T1DM Population December 2011		Number of people<18 on an insulin pump and percentage of <18 T1DM Population August 2012		Number of people<18 on an insulin pump and percentage of <18 T1DM Population December 2012		Number of people<18 on an insulin pump and percentage of <18 T1DM Population March 2013		Number of people<18 on an insulin pump and percentage of <18 T1DM Population June 2013		Number of people<18 on an insulin pump and percentage of <18 T1DM Population July 2013		Number of people<18 on an insulin pump and percentage of <18 T1DM Population August 2013	
NHS Ayrshire and Arran	249	62	18	7.8%	29	11.33%	39	15.18%	47	18.3%	53	21.3%	55	22.1%	57	22.9%
NHS Borders	68	17	17	23.0%	19	26.39%	22	31.43%	21	30.0%	26	38.2%	26	38.2%	26	38.2%
NHS Dumfries and Galloway	79	20	2	2.5%	5	6.25%	10	12.50%	16	20.0%	20	25.3%	20	25.3%	20	25.3%
NHS Fife	200	50	19	9.5%	31	17.32%	33	16.50%	36	18.1%	40	20.0%	42	21.0%	43	21.5%
NHS Forth Valley	192	48	12	6.9%	14	7.95%	25	14.20%	30	15.6%	29	15.1%	30	15.6%	29	15.1%
NHS Grampian	339	85	22	7.0%	32	9.94%	38	11.66%	43	12.7%	42	12.4%	42	12.4%	45	13.3%
NHS Greater Glasgow & Clyde	509	127	50	8.4%	68	11.76%	72	11.34%	104	19.5%	116	22.8%	134	26.3%	140	27.5%
NHS Highland	199	50	0	0.0%	4	1.90%	6	2.59%	6	2.9%	13	6.5%	17	8.5%	19	9.5%
NHS Lanarkshire	403	101	0	0.0%	5	1.25%	15	3.76%	33	8.3%	43	10.7%	43	10.7%	47	11.7%
NHS Lothian	348	87	39	10.7%	54	13.17%	59	15.61%	66	17.5%	66	19.0%	66	19.0%	69	19.8%
NHS Orkney	13	3	4	25.0%	3	20.00%	3	20.00%	3	20.0%	3	23.1%	3	23.1%	3	23.1%
NHS Shetland	14	4	0	0.0%	2	11.76%	2	14.29%	4	28.6%	4	28.6%	4	28.6%	4	28.6%
NHS Tayside	201	50	58	29.4%	68	33.01%	63	31.03%	57	28.2%	63	31.3%	64	31.8%	63	31.3%
NHS Western Isles*	22	6	0	0.0%	0	0.00%	0	0.00%	0	0.0%	1	4.5%	1	4.5%	5	22.7%
Scotland	2904	709	241	8.4%	334	11.36%	387	12.88%	466	16.1%	519	17.9%	547	18.8%	570	19.6%

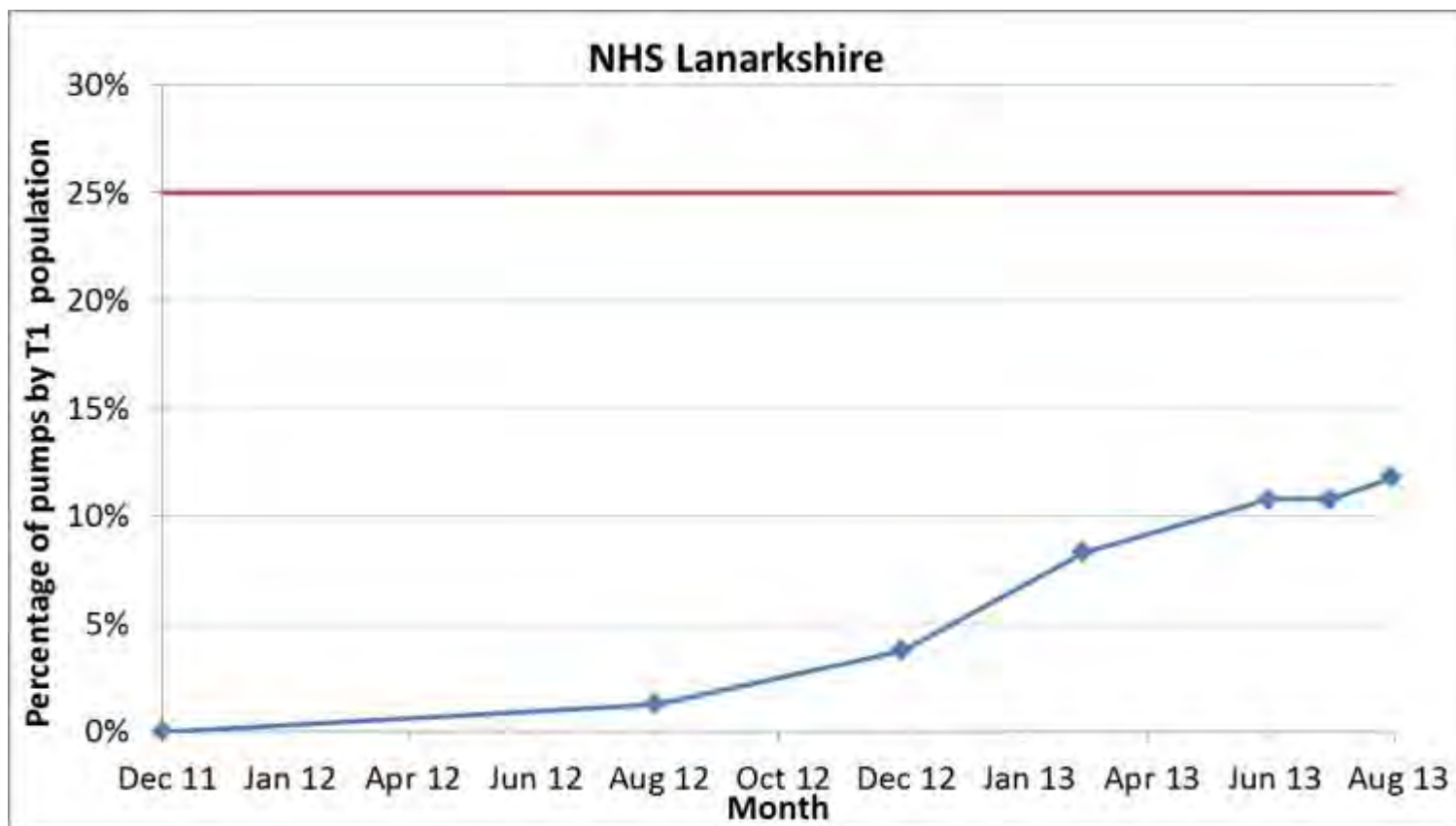
Insulin Pump Provision for Over 18's

NHS Board	number of people >18 with T1DM (August 2013)	Total number of pumps needed to meet commitment	percentage of >18 T1DM Population December 2011		percentage of >18 T1DM Population August 2012		percentage of >18 T1DM Population December 2012		percentage of >18 T1DM Population March 2013		percentage of >18 T1DM Population June 2013		percentage of >18 T1DM Population July 2013		percentage of >18 T1DM Population August 2013		Number of pumps still needed
NHS Ayrshire and Arran	1968	121	17	0.86%	28	1.41%	42	2.13%	46	2.35%	53	2.69%	53	2.69%	63	3.20%	58
NHS Borders	562	34	34	6.22%	33	6.06%	36	6.65%	40	7.18%	40	7.12%	42	7.47%	44	7.83%	0
NHS Dumfries and Galloway	816	50	21	2.56%	24	2.69%	26	2.91%	40	4.48%	48	5.88%	48	5.88%	49	6.00%	1
NHS Fife	1786	113	113	6.37%	108	6.18%	110	6.22%	123	6.90%	119	6.66%	123	6.89%	126	7.05%	0
NHS Forth Valley	1459	88	33	2.29%	46	3.17%	55	3.80%	58	3.98%	61	4.18%	62	4.25%	63	4.32%	25
NHS Grampian	2802	166	50	1.83%	57	2.09%	58	2.09%	62	2.22%	65	2.32%	65	2.32%	67	2.39%	99
NHS Greater Glasgow & Clyde	5791	340	45	0.80%	71	1.26%	88	1.56%	112	1.95%	136	2.35%	132	2.28%	134	2.31%	206
NHS Highland	1806	95	29	1.85%	37	2.36%	40	2.52%	40	2.21%	46	2.55%	50	2.77%	50	2.77%	45
NHS Lanarkshire	3145	190	56	1.79%	57	1.81%	61	1.94%	76	2.42%	87	2.77%	91	2.89%	95	3.02%	95
NHS Lothian	3993	232	169	4.42%	202	5.23%	195	5.13%	217	5.52%	230	5.76%	244	6.11%	247	6.19%	0
NHS Orkney	107	6	1	0.96%	2	1.90%	3	2.91%	3	2.86%	3	2.80%	3	2.80%	3	2.80%	3
NHS Shetland	113	6	2	1.87%	3	2.75%	3	2.73%	3	2.75%	3	2.65%	3	2.65%	3	2.65%	3
NHS Tayside	1722	101	72	4.31%	82	4.91%	78	4.61%	86	5.04%	90	5.23%	91	5.28%	91	5.28%	10
NHS Western Isles	162	10	1	0.63%	2	1.18%	2	1.20%	2	1.18%	2	1.23%	2	1.23%	2	1.23%	8
Scotland	26167	1552	643	2.52%	752	2.94%	797	3.11%	908	3.47%	983	3.76%	1009	3.86%	1037	3.96%	515

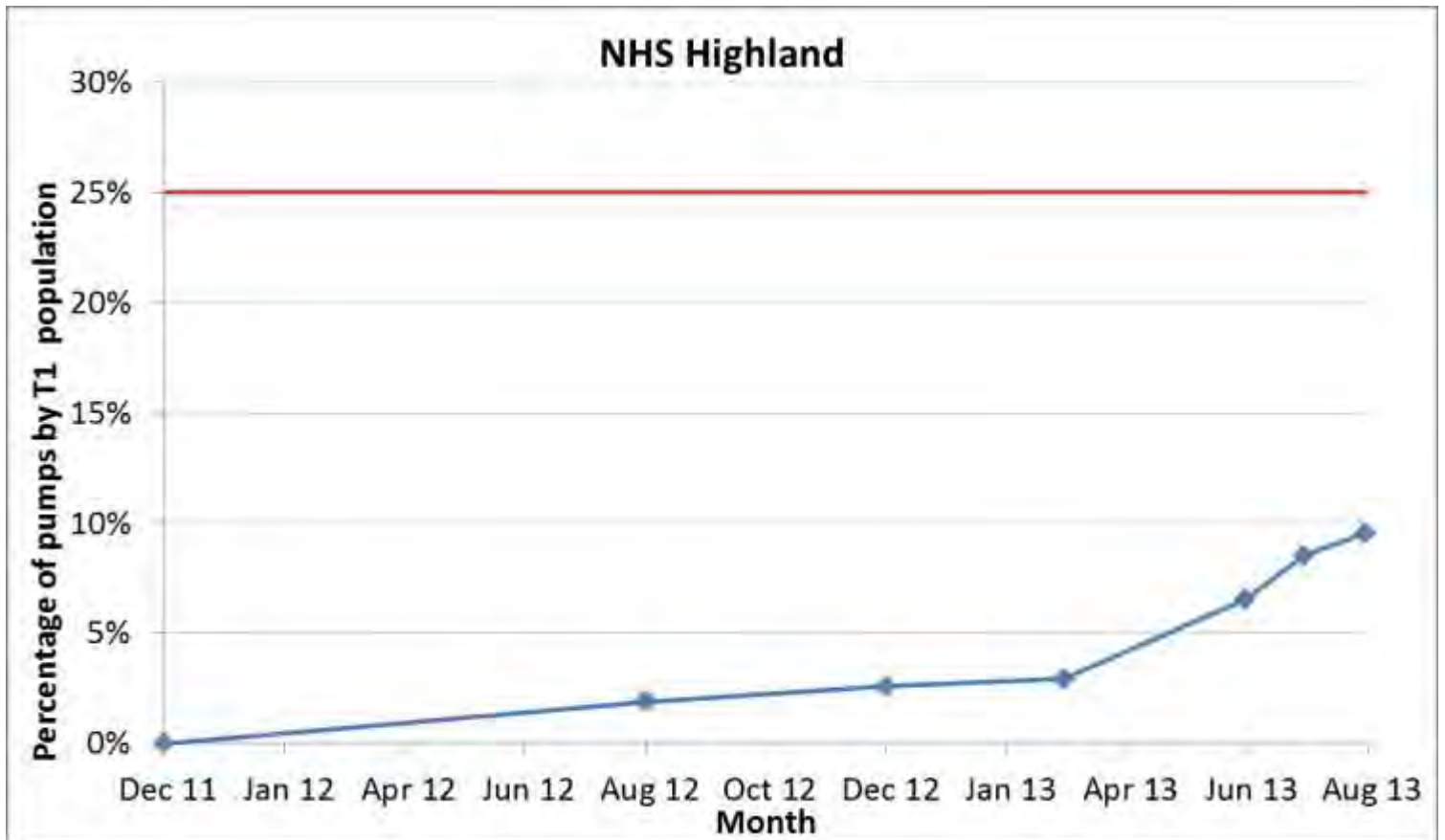
NHS Scotland performance for over 18s December 2011 – August 2013 – Management Data



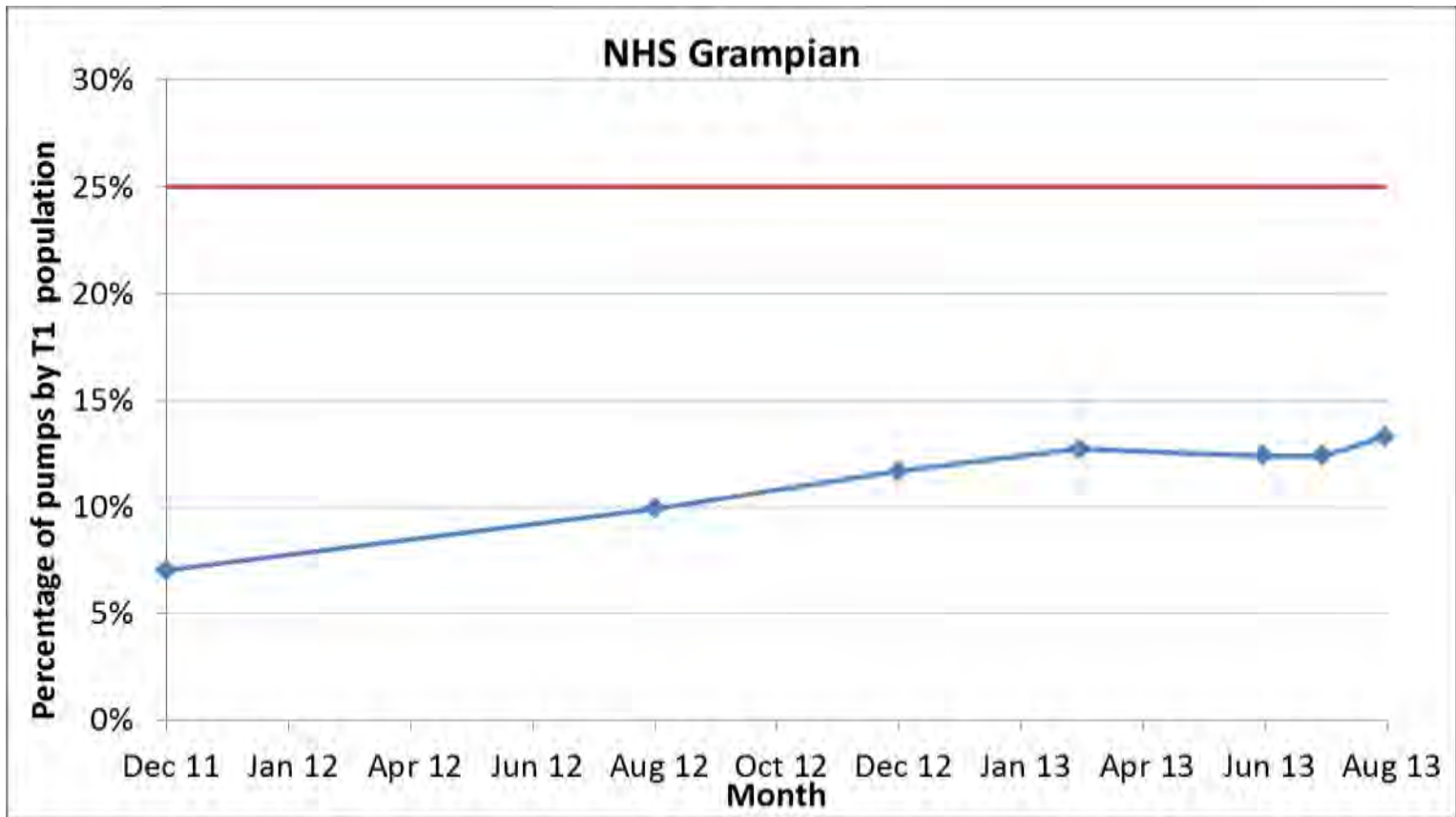
Run charts showing key board's progress to meeting the Ministerial commitment for under 18s



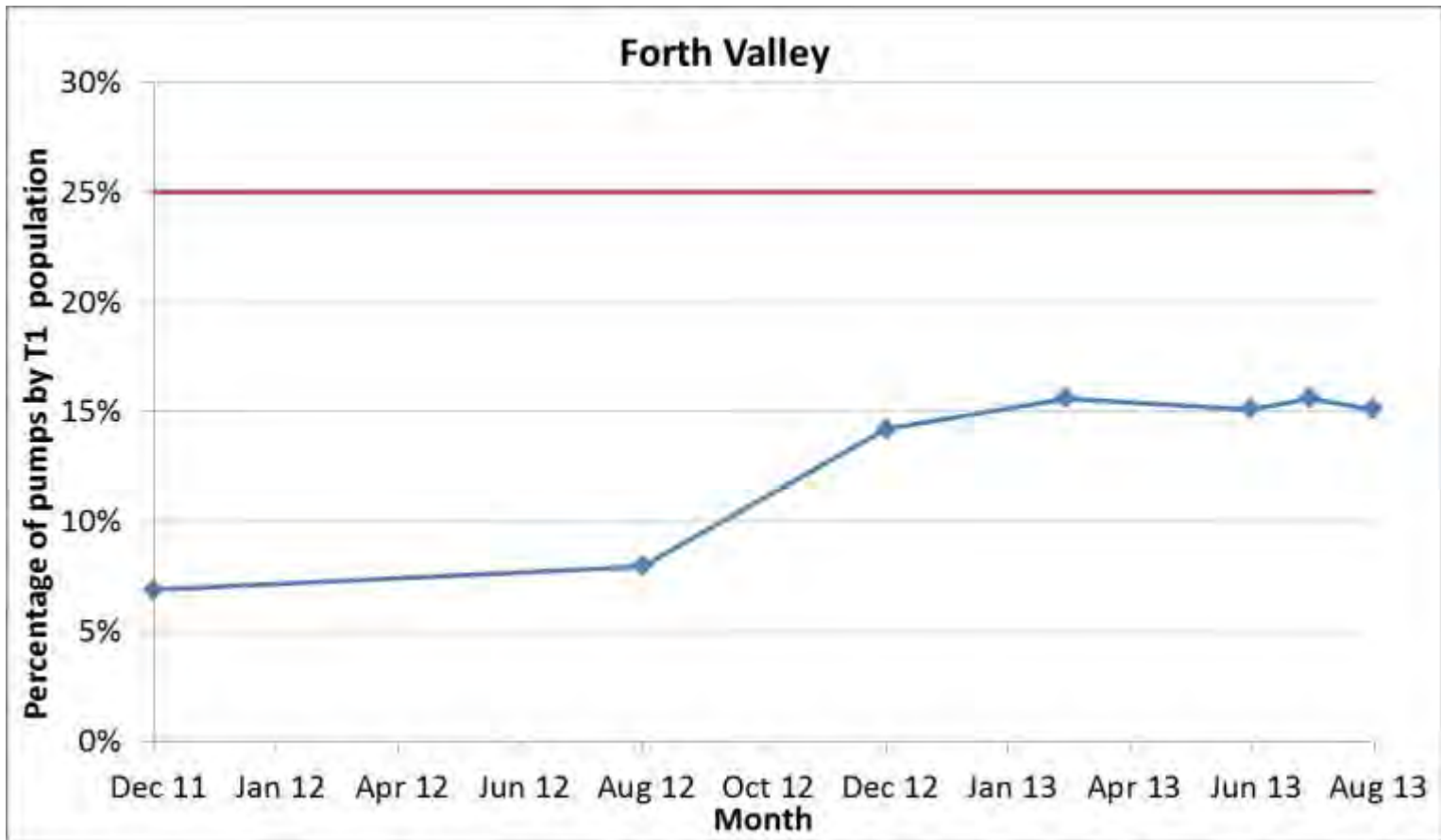
- NHS Lanarkshire have indicated that they expect to start 13 new under 18s by the end of November and 10 more by the end of December.
- NHS Lanarkshire are committed to meet the Ministerial commitment by March 2015



- NHS Highland expect to start a further 5 under 18s on insulin pump therapy by October.
- NHS Highland have ramped up their awareness campaign to raise interest in insulin pump therapy
- Argyll & Bute (Part of Highland) CHP pump initiation is undertaken as part of SLA with NHSGG&C.
- New nursing and dietetic staff for the paediatric pump service in North Highland which started in post in March 2013.
- NHS Highland have committed to meeting the Ministerial commitment for under 18s by March 2015



- NHS Grampian expect to start 3 new under 18s on insulin pump therapy in September.
- A new pump administrator joined the team in August and pump training is currently on-going with the Diabetes Specialist Nurses.
- 11 members of staff will have taken Edinburgh Napier University Online Pump course by January 2014
- NHS Grampian have committed to meeting the Ministerial commitment by March 2014



- NHS Forth Valley expect to start 3 new under 18s on insulin pump therapy in September.
- 10 Under 18s were offered insulin pump therapy in July, but declined for various reasons. This is being explored further.
- The paediatric pump service has developed significantly since April 2012.
- New nurse, medical and dietician education are now in place
- Pre-pump education/ carbohydrate counting programmes are now in place
- NHS Forth Valley expect to meet the Ministerial commitment by December 2013